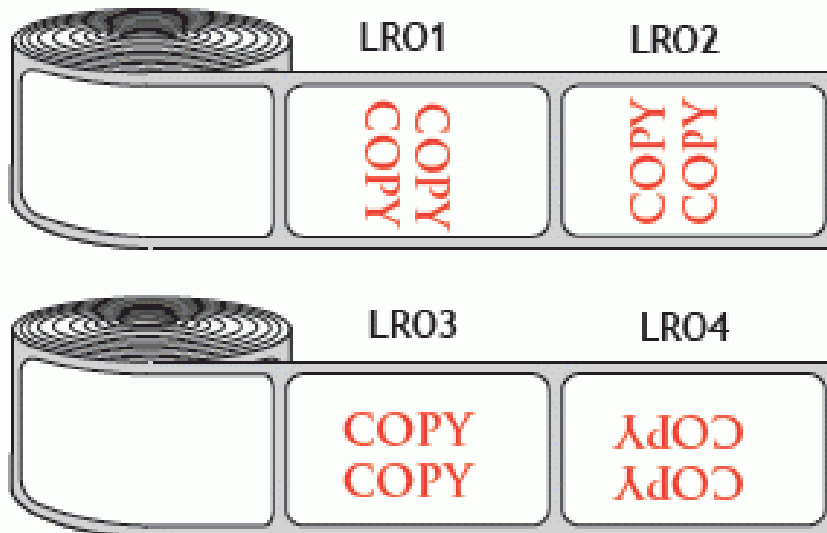


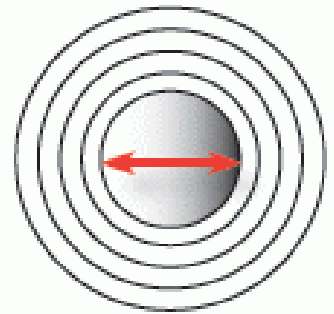
THERMALS



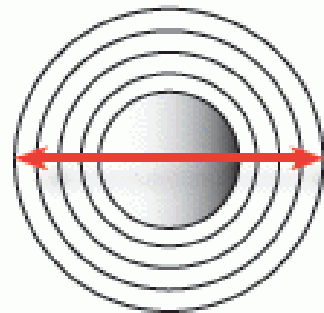
LABEL ROLLED OUTSIDE



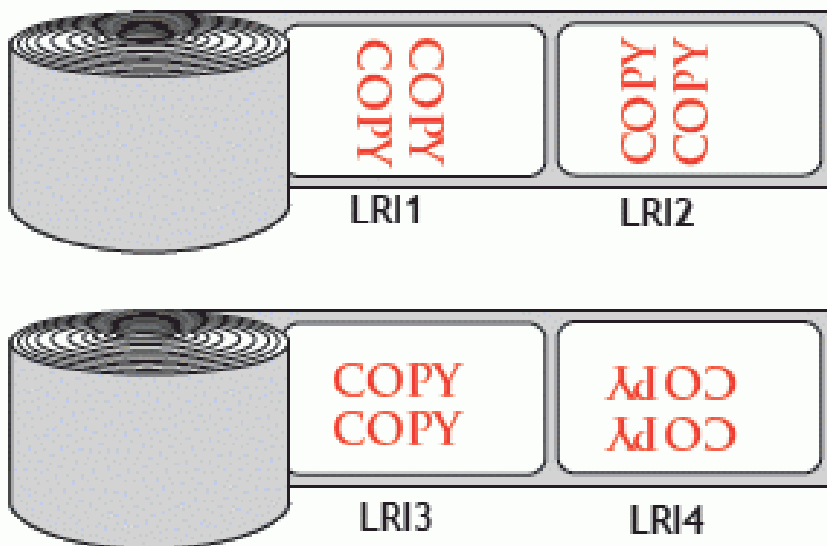
CORE SIZE



OUTSIDE DIAMETER



LABEL ROLLED INSIDE



When ordering Custom Thermal Labels, in addition to deciding color and layout choices, you are also given control over the way the label is printed on the roll. The direction codes shown here are used to indicate the direction the imprint reads as the finished roll is unwound. The core size and maximum outside diameter are determined by your equipment.